

SUGAR® PLUG-IN FOR IBM® LOTUS NOTES®

Instantly synchronize your IBM Lotus Notes email and calendar with your SugarCRM® system. Access SugarCRM directly and easily from within Lotus Notes.

The Sugar plug-in for IBM Lotus Notes enables seamless integration between Lotus Notes and SugarCRM including:

Email Integration

- Copy inbound and outbound emails and attachments to SugarCRM in a single click using email caller ID
- Link Emails with Contacts, Accounts, Opportunities, Projects or Cases
- Select To, Cc: and Bcc: addresses directly from SugarCRM
- Display the contact phone number and other important information in Lotus Notes
- Choose which contacts and emails get synchronized

Calendar Integration

- Get a 360 degree view from your inbox with a single click
- Copy any Lotus Notes Calendar entry to SugarCRM.
- Link calendar items with Contacts, Accounts, Opportunities, Projects or Cases.
- Display the contact phone number and other important information in Lotus Notes
- Manage a single calendar within Lotus Notes and have it automatically synchronize with SugarCRM.

Task (To Do) Integration

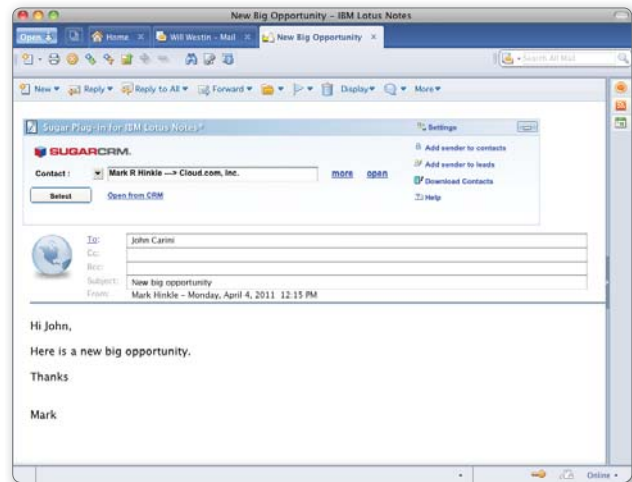
Integrate your existing tasks effortlessly into your SugarCRM workflow.

- Copy any Lotus Notes tasks to SugarCRM
- Link tasks with Contacts, Companies, Project or Cases
- Display the contact phone number and other important information in Lotus Notes
- Manage your tasks within Lotus Notes and sync automatically with SugarCRM

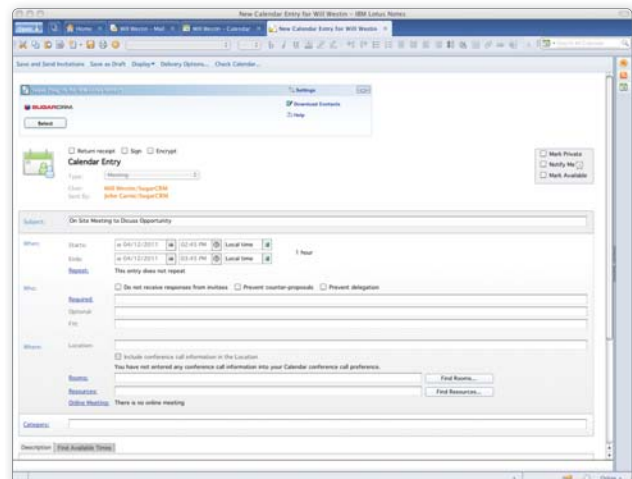
Personal Address Book Integration

Maintain a single address book in Lotus Notes including SugarCRM contacts.

- Copy any SugarCRM contact to the Lotus Notes Personal Address book.
- Available directly from email – Easily copy SugarCRM contacts to the Lotus Notes Personal Address Book from an email message.
- Use Native Lotus Notes Email Addressing to send Emails to SugarCRM contacts.



Turn your Lotus Notes email into a powerful component of your SugarCRM application.



Link and sync any Lotus Notes calendar item with SugarCRM—automatically!

Requirements

- Sugar 6 Enterprise Edition
- IBM Lotus Notes Version 6 or higher (Including Notes 6, 7 and 8)

Contact SugarCRM today to request a demo. www.sugarcrm.com • +1-877-842-7276

www.sugarcrm.com

10050 North Wolfe Road ▪ SW2-130 ▪ Cupertino, CA 95014 ▪ T: 408.454.6900 ▪ F: 408.873.2872
SugarCRM Deutschland GmbH ▪ Crusiusstrasse 1, Munich ▪ Germany 80538 ▪ T: +49(0)89.18.91.72.0 ▪ F: +49(0)89.18.91.72.150
Copyright © 2011 SugarCRM, Inc. All rights reserved. SugarCRM and the SugarCRM logo are registered trademarks of SugarCRM, Inc. in the United States, the European Union and other countries. All other trademarks are the properties of their respective companies.



04-11-024